



The power of data. **Optimized.**

Welcome to New Efficiencies in Tank Management

Save Time • Reduce Risk • Maximize Profits



Any Tank, Any Where, Any Time

With TankScan's web based solution you can access your tank information from your smart phone, desktop computer or laptop anywhere in the world at anytime. No need to load an app or software. Just login through an Internet browser. Now that's Easy!



24/7 Service and Support

Available, experienced pre-sale, post-sale and on-line support.

Comprehensive support both pre-sale and post-sale/in-person and on-line. Our 24/7 support ensures a successful install, meaningful personal training, ongoing continuous improvement and proactive maintenance. Whether in person, on the phone or on-line; our support is available and ready to guide you to an amazing and rewarding experience.

Online Support Videos



Online Support Documents



Phone Support



tankscan.com/videos

tankscan.com/support

800-523-6996

Hardware

Complete, Modern Line of Cellular and Local Wireless Monitors, Gateways and Partner Solutions

Radar Monitors (TSM)

Radar – used for up to 40 ft tall tanks. Commonly deployed on diesel, gasoline and lubricant tanks.

Cellular is most commonly used for remote single tank applications.



Non-contact Monitors: Radar (TSR) and Ultrasonic (TSU)

Best used when a non-contact measurement is an advantage. Commonly deployed on DEF, water, chlorine, and specialty chemicals tanks and totes.

TSU and TSR - used for up to 12 ft tall tanks.

The Radar sensor has the added ability to be able to sense through plastic tank walls and is resistant to condensation.



Partner Solutions

Low-Cost Cellular Ultrasonic



Use on remote tanks with cellular coverage and in climates that remain above 32° F. Monitors are available for measuring up to 13 and 26 ft tall tanks.

Wi-Fi Ultrasonic



For use in climates that remain above 0° F and installations in general purpose locations where only power for a Wi-Fi gateway is required.

Gateways

C-Store Fuel Inventory Gateway (TSC)



Communicates with existing Automatic Tank Gauge (ATG) equipment placed for detecting fuel levels in underground storage tanks.

Sensor to Cellular Gateway



Easily integrate specialty or existing level or other process sensors using 4-20mA or 0-10V signals.

Propane



Conveniently monitor propane tanks with this non-intrusive CID1 certified monitor.

Submersible Pressure



Battery powered monitor that is easily installed into tanks, has CID1 certification for hazardous locations, and utilizes cellular connectivity.

Local Wireless Gateways



Connect up to 20 wireless monitors to the Internet using a cellular or Ethernet connections.

More partner solutions are in development, please contact us with your unique needs at cct@tankscan.com or 800-523-6996.

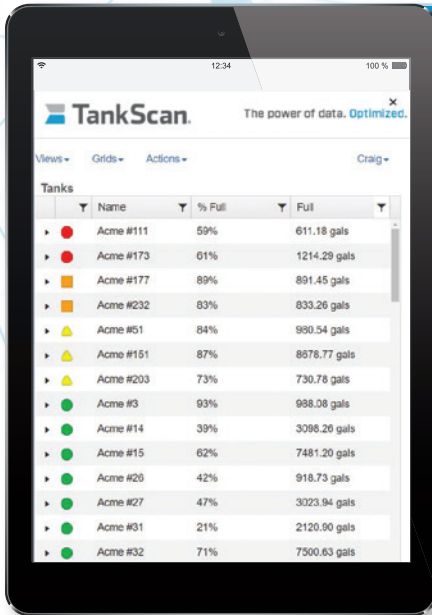
Dashboard

Intuitive, Powerful Tank Monitoring Dashboard



Critical Warning and Alerts

Dashboard is presorted placing tanks requiring immediate attention to the top of the list. Alerts are automatically sent to email or text messages to preselected user, based on chosen tank levels.



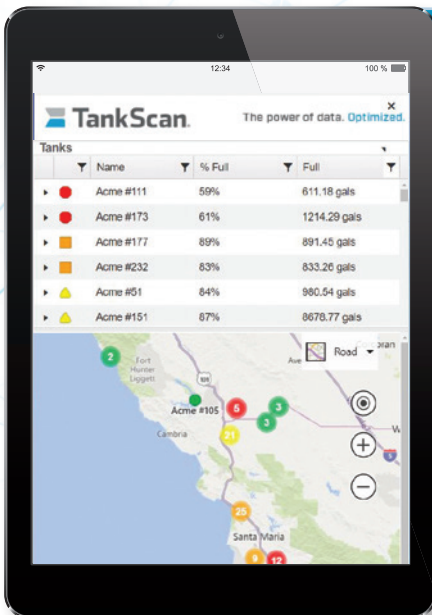
Reporting and Trending

Data is stored and can be easily accessed. The dashboard also has Restful API connections to move data to other locations if desired.



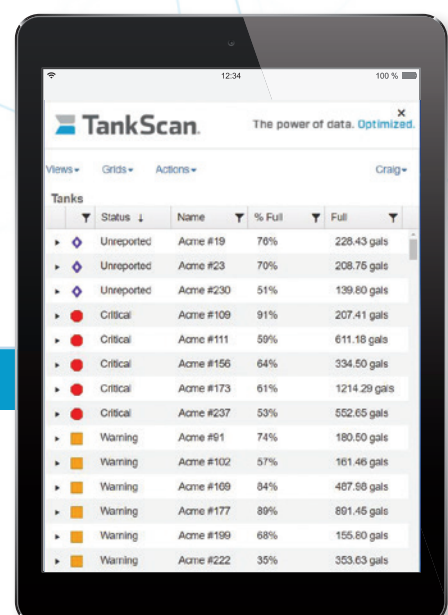
Locations at A Glance

Tanks are displayed on mapping software to help determine optimal routing and truck dispatching.



Status At A Glance

Dashboard is customizable to show, hide and add custom data columns. Can be easily filtered and sorted for tanks of interest.



Applications

Your Application, Our Monitor

Fuel Delivery & Inventory Management



Bulk Fuel Storage and Distribution



Diesel Generator Monitoring

Specialty Chemical & Agriculture Products



Diesel Exhaust (DEF) Solutions



De-Icer Monitoring

Lubricant Delivery & Inventory Management



Fast Lube Bulk Tank Inventory



Lubricant Distribution

Oil Field Support



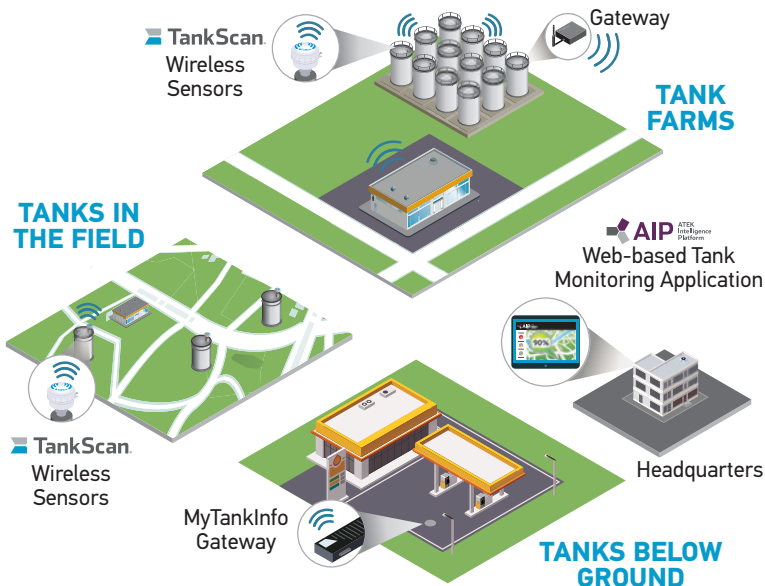
Saltwater Disposal Logistic Services



Fuel Tank Monitoring

For more applications visit www.tankscan.com/applications

Easy and Reliable Wireless Tank Level Monitoring



Tanks in Field

Service tanks in the field with accurate wireless level monitoring and alerts to reduce trucking-related costs, enhance inventory management and improve customer service.

Tank Farms

Manage tank farms or bulk storage tanks with accurate wireless level monitoring and alerts to eliminate the human factors of time, accuracy and risk to safety while improving inventory management.

Tanks Below Ground

Service your C-Store customers USTs connected to any Automatic Tank Gauge (ATG) with accurate level monitoring and alerts to reduce trucking-related costs, enhance inventory management and improve customer service.

Simple to Specify, Order and Install Monitors and Accessories

SENSOR TECHNOLOGY			MEASUREMENT RANGE				COMMUNICATION				HAZARDOUS LOCATION				
T	S	M	1	2	4	0	C	4	L	1	H	1	R	G	A
LABELING										OPTIONS					

SENSOR TECHNOLOGY							
TSR1	1000 Series - Non-Contact Radar						
TSM1	1000 Series MIR						
TSU1	1000 Series Ultrasonic						
TSPS	Submersible Pressure						
TSD	Dial Gauge Reader						
TSUT	T Series – Ultrasonic						
MEASUREMENT RANGE	TSR1	TSU1	TSM1 SR	TSM1 TR	TSPS	TSD	TSUT
XXX	144"	60", 144"	60", 96"	144", 240", 300", 360", 420", 480"	120", 401"	J=Junior Size Gauge S=Senior Size Gauge	144"
COMMUNICATION							
C4	VZW LTE CAT M						
C5	Aeris LTE CAT M (AT&T and International)						
R2	XBee Zigbee 2.4 GHz (not available on all series)						
W1	Wi-Fi (not available on all series)						
LABELING							
L1	ATEK Access Technologies Standard						
HAZARDOUS LOCATION							
H0	Unclassified						
H1	Available for TSM1, TSD and TSPS Sensor Technologies						
OPTION							
A	Remote Cellular Antenna		Available for TSM1 and TSU1 Sensor Technologies				
G	Global Positioning		Available for TSM1 and TSU1 Sensor Technologies				
M	Remote Sensor		Available for TSU1 Sensor Technologies				
MP	Remote Sensor Chemical		Available for TSU1 Sensor Technologies				
R	Remote Battery Pack (For 240" and taller tanks)	Hazardous Locations		Available for TSM1 Sensor Technologies			
		Non-Hazardous Locations		Available for TSM1 Sensor Technologies			

SR = Short Range | TR = Tall Range

220-0004-000 Rev. C 5/22

ATEK Access Technologies
10025 Valley View Road, Ste. 190
Eden Prairie, MN 55344 U.S.A.

PH: 1.800.523.6996
FAX: 1.800.589.3705
+1.218.829.9797

www.atekaccess.com



Access the power of technology.